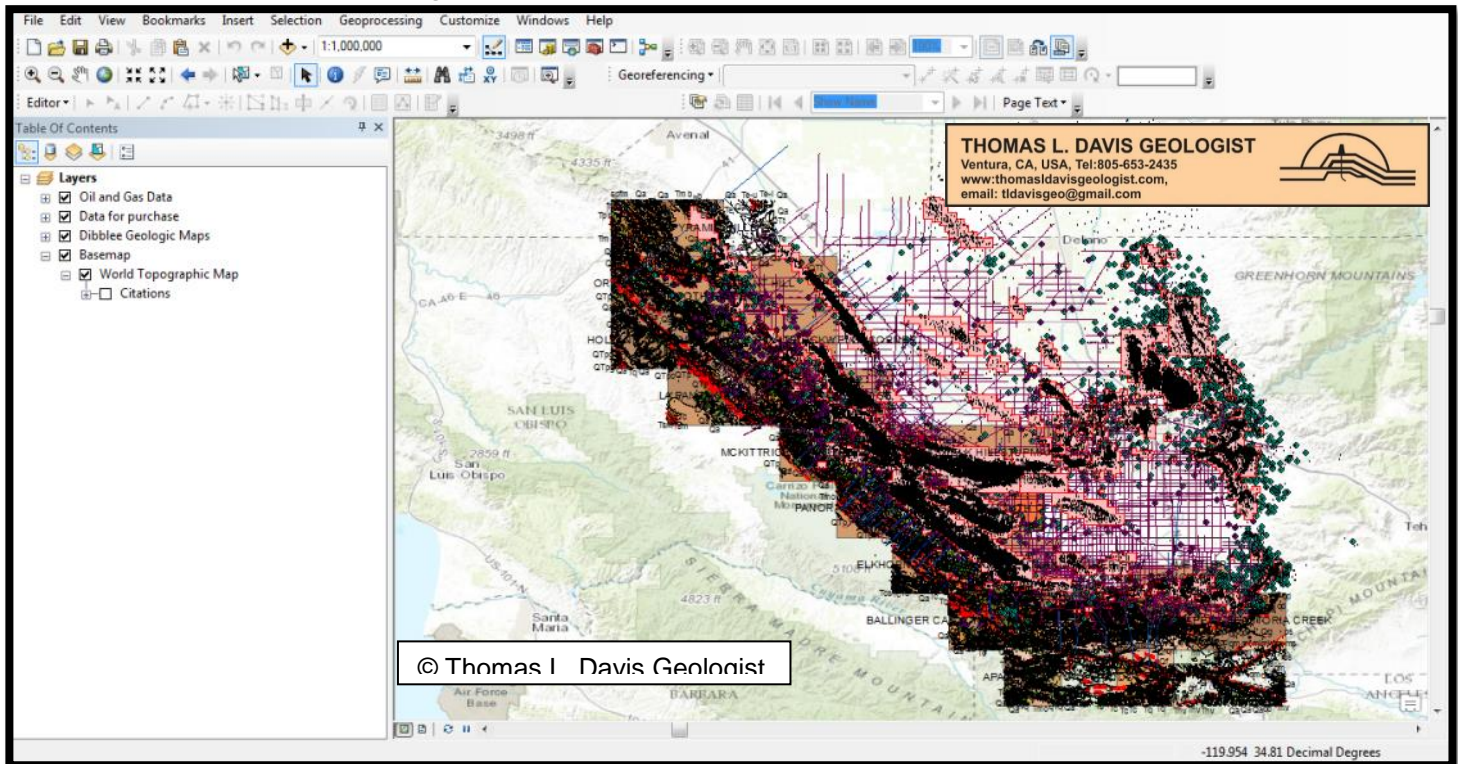


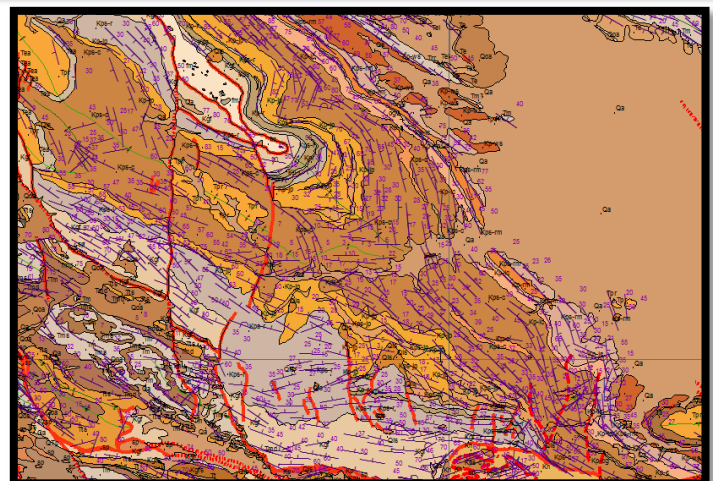
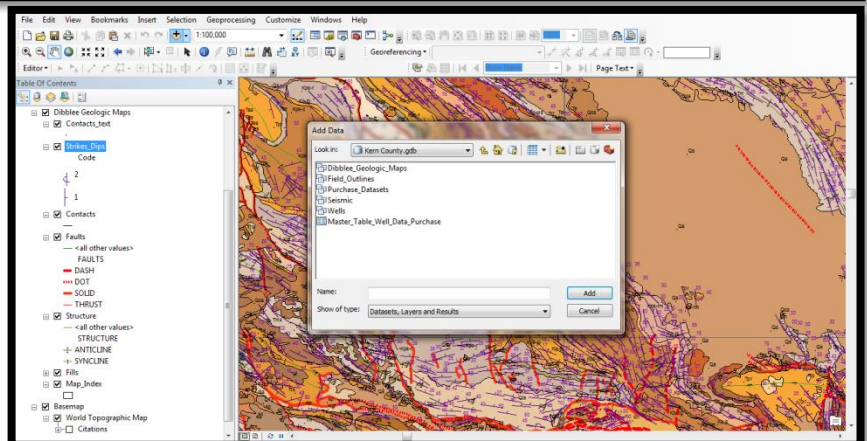
Kern County, California GIS Oil & Gas Geodatabase

A geospatial data collection that assists rapid and comprehensive evaluations of the oil and gas potential of Kern County: The geodatabase contains substantial amounts of data from proprietary and public sources of geologic mapping, wells, oil & gas fields, and seismic surveys, and incorporates these data into a single geospatial database that provides rapid viewing, evaluation, and analysis.



The geodatabase contains 5 feature datasets

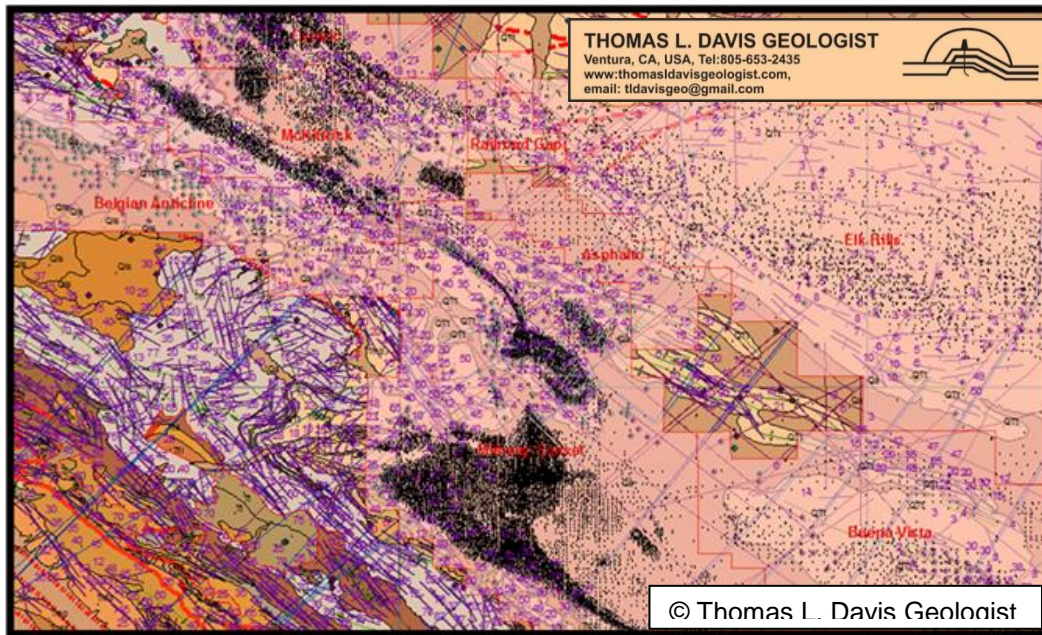
- ▢ Kern County.gdb
 - ▢ Dibblee_Geologic_Maps
 - ▢ Contacts
 - ▢ Contacts_text
 - ▢ Faults
 - ▢ Geologic_Fills
 - ▢ Map_Index
 - ▢ Strikes_Dips
 - ▢ Structure
 - ▢ Field_Outlines
 - ▢ DOGGR_Field_Outlines
 - ▢ Purchase_Datasets
 - ▢ Davis_Namson_Xsections_1
 - ▢ Field_Assessments
 - ▢ South_Temblor_Xsections_1
 - ▢ Well_Dev
 - ▢ Well_Dip
 - ▢ Well_LAS
 - ▢ Well_Tops
 - ▢ Seismic
 - ▢ PacSeis_2D
 - ▢ Wells
 - ▢ DOGGR_D4_Wells
 - ▢ Master_Table_Well_Data_Purchase



Product Description: The Kern County, California GIS Oil & Gas Geodatabase contains the complete and detailed surface geology of western Kern County (from T.W. Dibblee Jr. geologic mapping sources). All map attributes are geospatially referenced (much more than the geo-referenced scans offered by the AAPG). Surface geology is critical to petroleum geology and engineering endeavors in California, and especially along the oil prolific margins of the San Joaquin basin that have produced over 14 BBO. Surface geology constrains cross sections, seismic lines, and subsurface mapping, and provides the surface location of reservoir outcrops and key structures that can be investigated in the field.

The geodatabase can be used as a stand-alone item or with your current GIS data. The geodatabase allows immediate use for map creation or data analyses, provide data that can be exported to user's required format, and is ready for web service enabling.

The geodatabase contains additional data such as oil & gas well locations, locations of 2D seismic lines and regional cross sections, oil & gas field outlines, and location of additional data sets that can be purchased.



These data are available as an ESRI geodatabase which can be used with either ArcGIS or ArcExplorer (free data viewer from ESRI) or can be used with many free/open-source GIS software (example: QGIS).

Cost for geodatabase is \$10,000.00 USD

For more information on this data package, additional Kern County & CA oil & gas data for purchase, and custom oil basin field trips contact Thomas L. Davis at: tldavisgeo@gmail.com

Also visit www.thomasldavisgeologist.com for a large collection of petroleum geology data and interpretations that can be downloaded for free.